



WATER SERVICES CONSIDERATIONS AND EMPLOYMENT LANDS

UISCE ÉIREANN









November 2024 Catherine Kelly



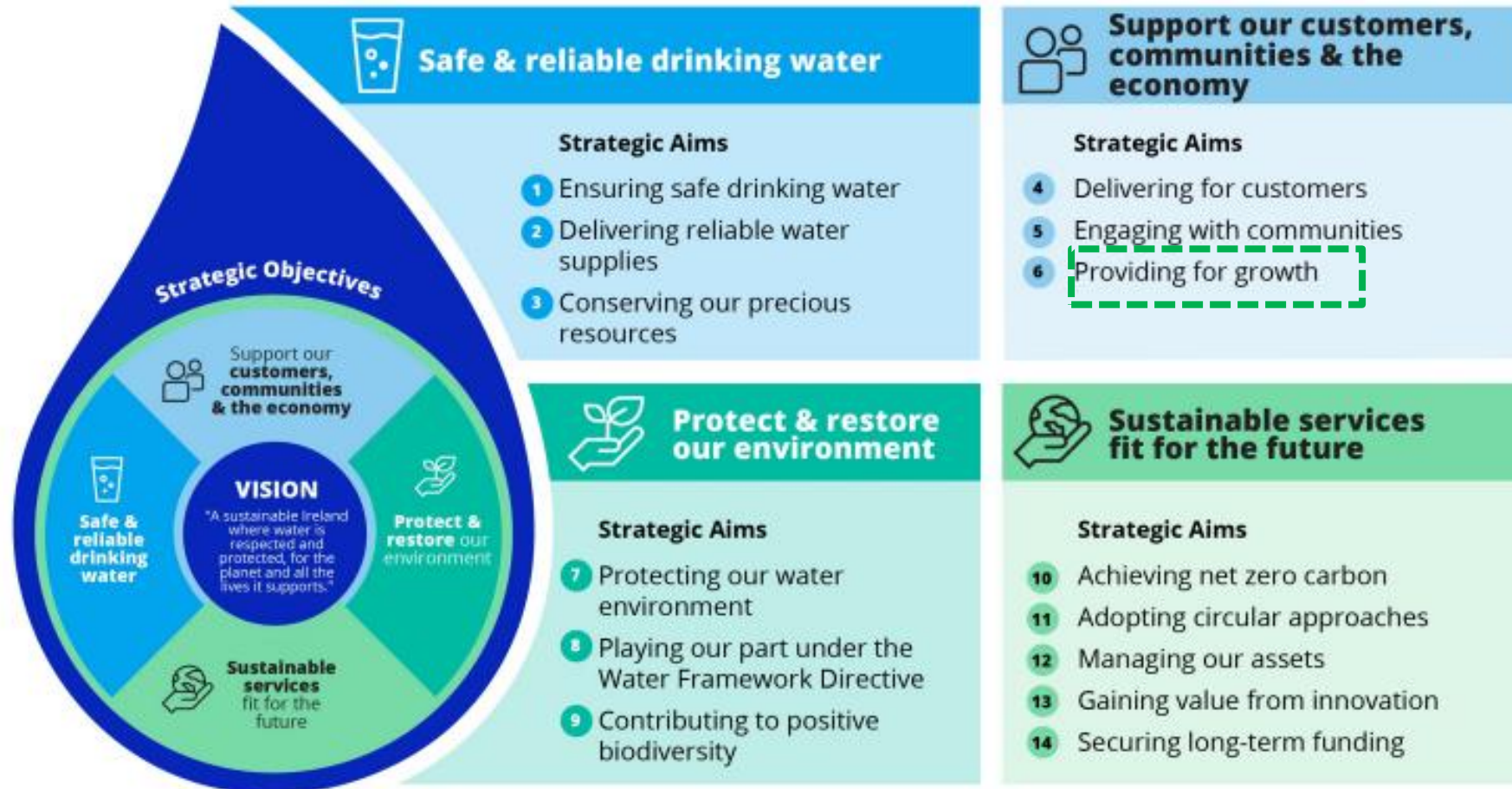
Agenda

- **What we do**
- **What we want to achieve**
- **How UÉ supports Growth & Development**
- **Why the Employment Lands Assessment is important to UÉ**
- **Closing Messages**

What we do

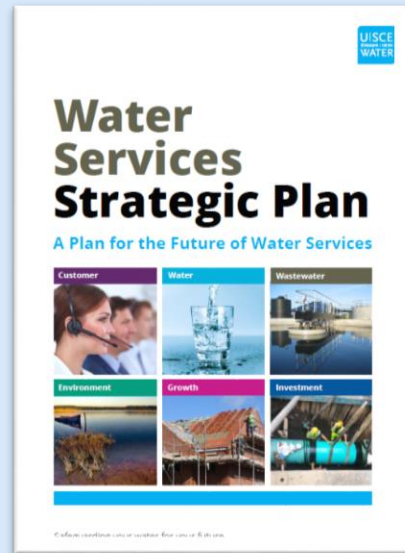
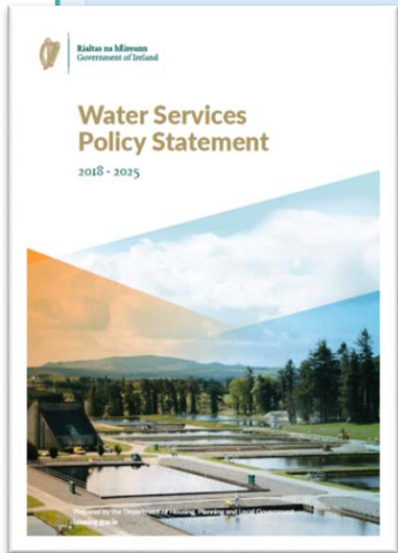
Customers	Water source	Litres treated per day	Length of network	
 DOMESTIC 1.61m	 ABSTRACTIONS 1,112	 WATER 1.7bn	 WATER 64,686km	20% Uisce Éireann uses 20% of electricity in the public sector.
 NON-DOMESTIC 174,184	 RESERVOIRS 1,522	 WASTEWATER 1.26bn	 SEWER 26,000km	€1.289bn Capital expenditure for full-year 2023
				€1bn Operational expenditure for full-year 2023

What we want to achieve: Our Vision



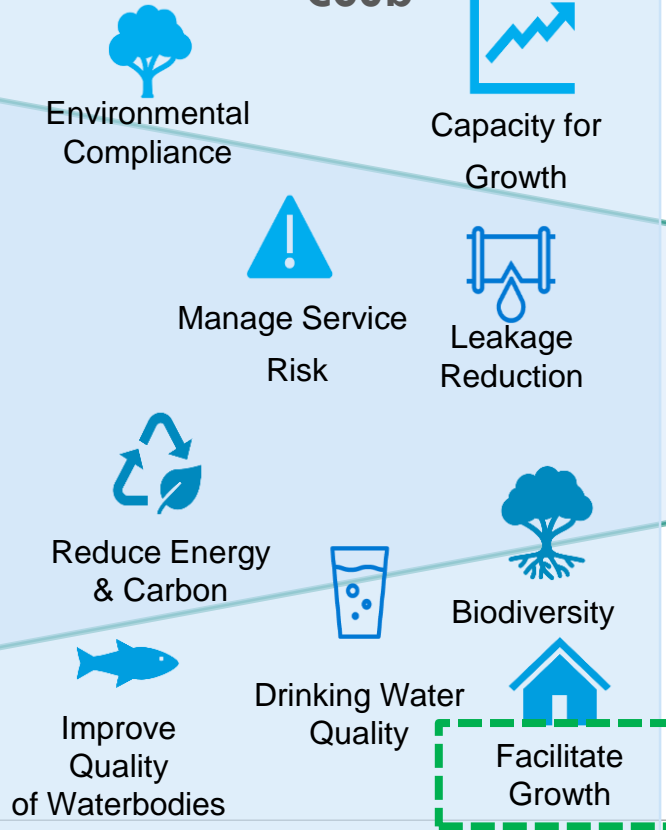
Supporting Growth: How we Invest for the future

Strategic Objectives and Aims



Asset & Service Needs

= ~ €60b



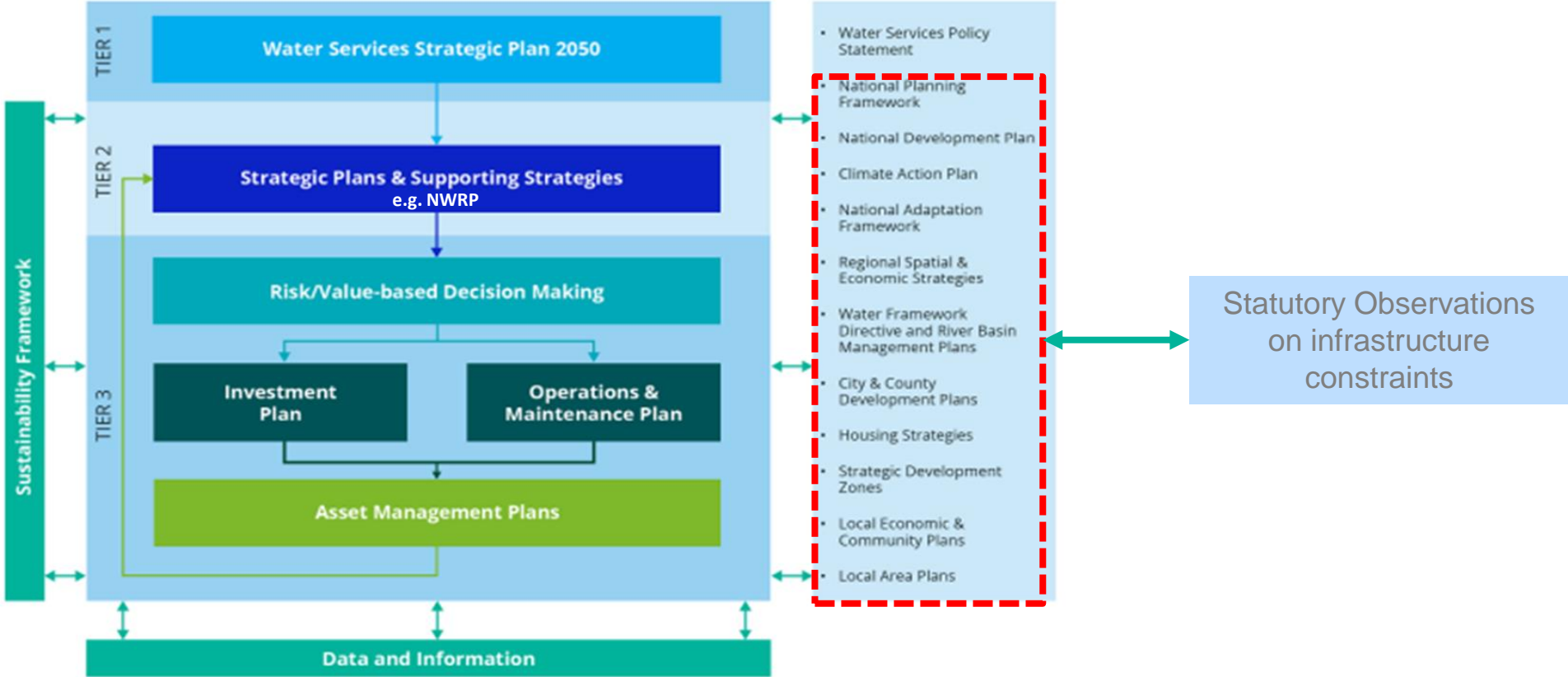
Constraints



Best mix of investments to meet objectives within constraints



Supporting Growth: UÉ Forward Planning



Supporting Development: UÉ Connection & Developer Services (CDS)

1. Pre-Connection Enquiry
 - Early indication of feasibility of connection
 - Submit before Planning Application
2. Connection Application
 - Confirms feasibility of connection
 - Submit after Planning Approval
3. Connection Process
 - QA assessment of infrastructure
 - Connection delivered

developerservices@water.ie



Sustainable Employment Growth: Employment Lands Assessment



Foul Drainage

- High demand
- Treatment capacity
- Network proximity & capacity
- Complementary development
- Alternatives
 - (e.g. Pre-treatment)



Water Supply

- High demand
- Treatment capacity
- Network proximity & capacity
- Complementary development
- Alternatives
 - (e.g. rainwater harvesting)



Surface Water

- High Demand
- Capacity of the site
- Potential reuse
- Alternatives
 - (e.g. permeable paving)



- GIS data available
 - datarequests@water.ie
- Engage with short-list of potential employment land sites
 - spatialplanning@water.ie

Closing Messages

- UÉ supports growth
- We need to be plan led
- We need to work together to maximise available infrastructure & environment capacity
- UÉ welcomes analysis of our data & early engagement
- Industry type is important to water services

- datarequests@water.ie
- spatialplanning@water.ie
- developerservices@water.ie